

MP3/WMA PLAYER

USER MANUAL

General Description of Functions

USB2.0 transmission speed.

Supporting multiple audio formats

MP1, MP2, MP3, WMA, WAV.

FM stereo radio (optional)

Having powerful function of automatic or manual station searching, available to store local stations as many as 20 different frequencies, allowing you to enjoy easily the radio programs.

U-disc function, needing no driver.

Manager program free, it is available to carry out file operation directly through "Movable disc" in "My computer" and it is driver free for the operation system above WIN2000.

Record / repeat

It is available to save the record into WAV format voice file with the help of microphone. And it is available to select sectional repeat or comparison repeat, realizing the real digital repeat function.

Equalizers of 6 kinds EQ

Natural, Rock, Pop, Classic, Jazz and DBB

Backlight color of 7 kinds

There are 7 kinds of backlight color for selection.

Multiple play modes

Normal, repeat one, repeat all, random play and browse play modes

Auto OFF

It is available to set up timer OFF, helping you in easy operation.

Elegant menu

Visual picture menu, together with relative language display, facilitating an easy and simple operation !

Fast forward and fast rewind

Sync Lyric

Safety precautions

1. To ensure your safety, please do not use the player in a damp location or spray water to the player.
2. It is recommended not to use the player in very hot/cold, dusty or humid environment.
3. Please do not disassemble or repair the player by yourself. Otherwise, it may affect the quality guarantee of the player. MP3 player itself has no parts available for the user to repair by oneself. Please contact the professional personnel in case the repair is required.
4. We do not recommend that you use earphone and MP3 player when you are driving. Please do not use earphone when you are driving or engaging in activity requiring concentration since it will divert your concentration.
5. Your hearing ability may be harmed permanently due to listening to the player with strong volume for a long time. Therefore, it is recommended that you adjust the volume of MP3 player to a proper magnitude to avoid damaging your hearing ability. Please stop using MP3 player immediately when you feel tinnitus.
6. If you do not intend to use the player for a long time, please take out the battery, otherwise the battery may leak, corrode and damage the player.
7. Avoid dropping the player when using, otherwise it may lead to scratching of the player.

STATEMENT

Thank you for using of digital MP3 player of our company!

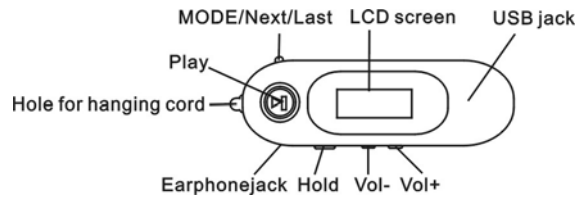
Prior to using the product, it is recommended that you read carefully the operation manual of the player to facilitate the correct use of the product.

To better serve the users, the contents of the manual may be modified.

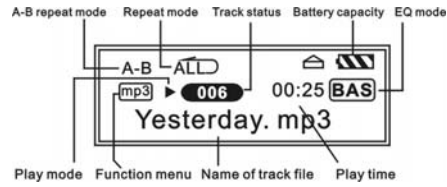
No prior notice will be given when there is any change on the performance and functions of the product. Please contact the sales agents for the up-to-date product information if the practical setting and operation are not the same as that given in the manual.

Know your player


Outline and key




Display screen



Battery capacity

 With the battery capacity being 1.5V, it is of a full range display. The power capacity indication will be decreased as the operation time increases.

 The inside of battery capacity icon will be blank when the battery capacity is almost ended and the icon flashes. In this case, it is required to charge the battery timely.

Key operation

Definition of key functions

1. "PLAY": ON/ PLAY/ STOP/OFF, hereafter referred to as "Play key".
2. "Mode": to select the entry and to enter the menu, hereafter referred to as "mode key".

3. "VOL+": volume increase, fast increase.
4. "VOL-": volume decrease, fast decrease.
5. "Next": next entry, fast forward.
6. "Last": last entry, fast rewind.
7. "USB": USB jack.
8. "Earphone jack": standard earphone jack.

Definition of key operation

The key operation includes short press, long press, press and hold, and press. The paragraphs below refer to short press unless otherwise stated.

Short press: Press the key for one time and the key comes into effect right away.

Long press: Press the key for more than 1.5 seconds before the key comes into effect, and only coming into effect for one time

Press: Press the key, which will only comes into effect at the moment the hand releases from the key.

Press and hold the key: The whole process starting from pressing the key to releasing the key, the event comes into effect in multiple times at a certain frequency, such as "Fast forward/fast rewind".

Basic Function

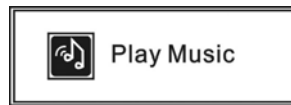
Enter menu

It is available to enter the various menus by pressing down Menu key. Long press the key to enter the menu at play status and short press to enter the menu at the stop status.

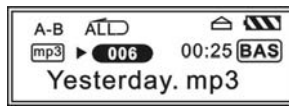
Enter different functional modes

Different functional modes may be entered from the menu.

Menu: (long press Mode key to enter), after enter the menu, slide MODE key to select.



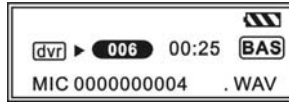
Music mode:



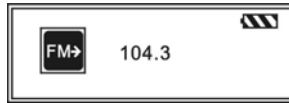
Record mode:



Play mode:



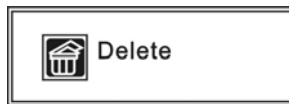
FM mode:



Browse play:



File delete:



Slide MODE key to select the required delete file, press PLAY key to confirm for the delete!

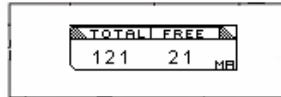
System setting:



Connecting PC to enter USB mode:



Memory information:



The digit here means the total capacity of the disk, with the percentage representing the occupied space ratio.

Volume adjust

"VOL+" increase volume.

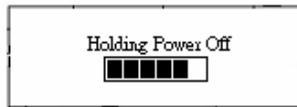
"VOL-" decrease volume.

Power ON/OFF

At power off status, short press Play key to turn on the power.

It will display LOGO or Hello

At power on status, long press Play key to turn off the power.



Play or stop (under record mode, with pause function);

Under music mode, short press Play key to play music.

Under play music status, short press Play key to stop play.

Record/pause (short press), stop record (short press)

Under record status, short press Play key to stop record. Press MODE key to enter the record play status.

Play music

Simple operation

1.Plug the earphone into the jack for earphone.

2.Short press Play key to turn on and to enter "Music mode", short press Play key again to start play music.

3.Select music: Last key: select the last music
 Next key: select the next music

4.Volume adjust: VOL+: to increase the volume VOL- : to reduce the volume

Sync lyric display

The player supports **".LRC" lyric files, lyric will be displayed when playing music.

How to use lyric files?

Keep the name of lyric file same as that of the track file.

For example:

The name of track files is: Yesterday.mp3

The name of lyric files is: Yesterday.lrc

Voice record

It is recommended to have enough battery capacity to carry out recording operation.

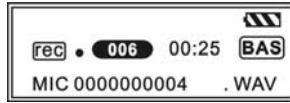
The player supports storage of multiple record files under each folder.

Record at "Record mode"



1. To enter the menu, slide Next key to select record mode.

2. Short press Mode key to enter the record mode and the picture is given below:



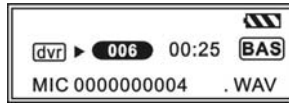
3. Short press Play key to pause the record, and short press Mode key to enter the record play mode.

⏮ The recorded voice is saved in the designated folder of "MICIN.DIR" .

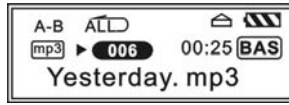
⏮ Only Play key and MODE key can work when recording.

Play record file

1. Enter the menu
2. Slide Next key to select "Voice mode"
3. Short press Mode key to enter the play mode interface.
4. Press again Play key to start play.



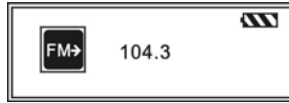
5. Select the record file.
Last key: select the last record file
Next key: select the next record file
6. Volume adjust



VOL+: to increase the volume
VOL-: to decrease the volume

Operation of FM radio (optional)

1. Enter the main menu.
2. Slide NEXT key to select "FM mode"
3. Short press Mode key to enter "FM mode"



4. Automatic search
Press Last/Next key for 2 seconds, the player searches forward or backward at a step of 100KHz and stops at the station searched. If it is required to stop, slide Last/Next to stop the searching.

5. Fine tuning

Slide Last key: backward a single step of 100KHz.

Slide Next key: forward a single step of 100KHz.

6. Store the searched frequency

Short press Mode key to enter FM menu and it will instruct you to store the searched frequency. Then short press Mode key to store the station.

7. Select and listen to the stations stored

If there are more than one station stored, it is available to short press Play key to listen to the station in a backward sequence.

8. Internal record function

It is available for you to record the favorite program while you are listening to the radio.

Short press Mode key to enter FM sub-menu and to select top quality record or long time record. In this case, it is available for you to record the presently playing program into the record folder. Short press Mode key to exit from the record mode.

9. Volume adjust

VOL+: to increase the volume

VOL-: to decrease the volume

Maximum 20 stations may be stored.

System setting

How to enter

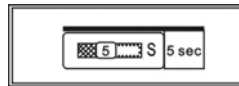
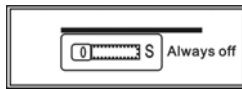
1. Enter the menu.

2. Slide Next key to select the menu and short press Mode key to enter "SYS Setting".

"Backlight time" setting

1. Enter the interface

2. Slide Next key to select "Backlight time": Press PLAY key to exit.



“EQ mode” Setting

1. Enter the interface

2. Slide Next key to select “EQ”: Press PLAY key to exit.



“Backlight mode” setting

The operation method is referred to “EQ mode” setting (mode 0-6 being mono-color, mode 7 being 7-color change-over.)

“Language select” setting

The operation method is referred to “EQ mode” setting. Enter the Language interface first.

“Play mode” setting

The operation method is referred to “EQ mode” setting. Enter the EQ interface first.

“Power off setting”

The operation method is referred to “Backlight time” setting.

“Contrast adjust”

The operation method is referred to “Backlight time” setting.

Application of USB Disc

The player is provided with standard USB disc function, supporting Windows98 (needing driver installation), Windows 2K or above system (needing no driver installation).

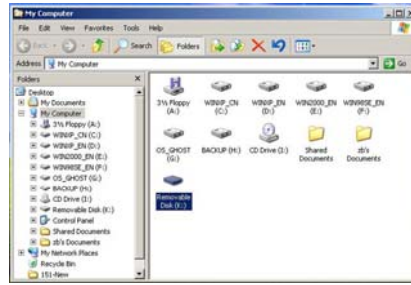
The player display mode after connecting to PC:



Computer connection and realization of flash disk function

1. USB transmission and MP3 file up-load

- (1) If your operation systems are WinME, Win2000, Winxp and Win2003, and they need no installation of driver program. After proper connection of USB data line, a movable disk will appear in the resource manager of WINDOWS. In this case, it is available for you to use MP3 player as a common disk as shown in the picture below:



- (2) If it is the first time for you to connect MP3 player to PC with operation system WIN98/SE, it is required to install the driver program.

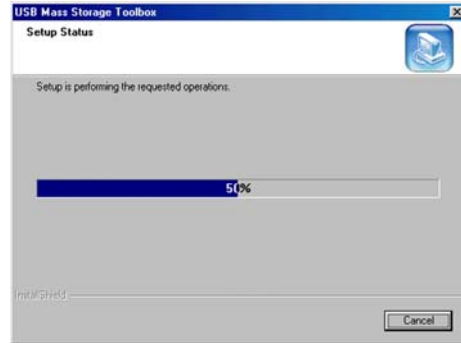
2. Driver installation for Win98

For MP3 player at WIN ME/2000/XP/2003, etc. operation systems, it is no need to install the driver program. If it is the first time for you to use MP3 player at WIN98 operation system, it is needed to install the driver program before connection of MP3 player and the operation step is given below:

- (1). Insert the installation disk affiliated to the player into CD-ROM.
- (2). Use the right key to open the driver disk and run "Disk icon SETUP.EXE" file. The following picture will appear.



(3). Click "NEXT" to enter the following picture:



(4). Click "NEXT" to enter the following picture:



Other settings

Delete file (required to enter the menu)

For music and play modes, it is available to enter the menu and to delete the corresponding files. Enter the delete menu, and slide MODE key to select the file required for delete, press PLAY key to confirm the delete.

⚠ To delete file in computer, it is required to firstly pop out the player and then remove the USB line. Otherwise, the file may not be deleted.

Play mode (play sub-menu)

At play music and play record file status, it is available to select different play modes (such as repeat and shuffle).

After the selection, the player will play according to the setting rules.

Fast forward and fast rewind

1. It works when playing music (only effective for MP3 file).
2. At low speed, slide Next key for fast forward play, and at low speed, slide Last key for fast rewind play.

Repeat mode

A- B: Under the play mode, short press MODE key for setting A/B section points and to enter A/B repeat function

FAQ

Problem	Solution
No power	Check if the battery is installed correctly. Check if the power is ON.
No sound can be heard from the earphone.	Confirm that the volume is not at 0 status and that there is no problem in the earphone connection. Please keep the earphone clean. The damaged MP3 file may cause noise of different levels and even can be played. So, it should be assured that the files are intact.
Abnormal words displayed on the screen.	Please confirm that correct language is selected.
FM reception effect is not good.	As the earphone may be used as antenna, adjust position of earphone respective to the player. Turn off the electric devices nearby.
It is not available to down load music normally.	Check the USB connection line and see if it is connected properly. Check if the driver is properly installed. Check if there is still space in the memory.

Technical parameters

Items	Parameters
Music format	MPEG 1, 2, 3, WMA, WAV
Bit rate	56Kbps~256Kbps
Frequency range	20Hz~20KHz
Signal/noise ratio	≥86DB
Separation	≥85DB (1KHZ referenced signal)
Frequency response	≤3DB (20HZ~20KHZ)
Output power of the earphone	L 4mW, R 4mW
EQ mode	Normal, POP, Jazz, Rock, Classic
Display	LCD
Type of port	2.0. Compatible with USB1.1
Memory media	FLASH
Memory	32-1GB
Play current	≤80mA
Power off current	≤300uA
Battery	One AAA No.7 alkali battery
Play time	About 10 hours
File system	FAT, FAT32

